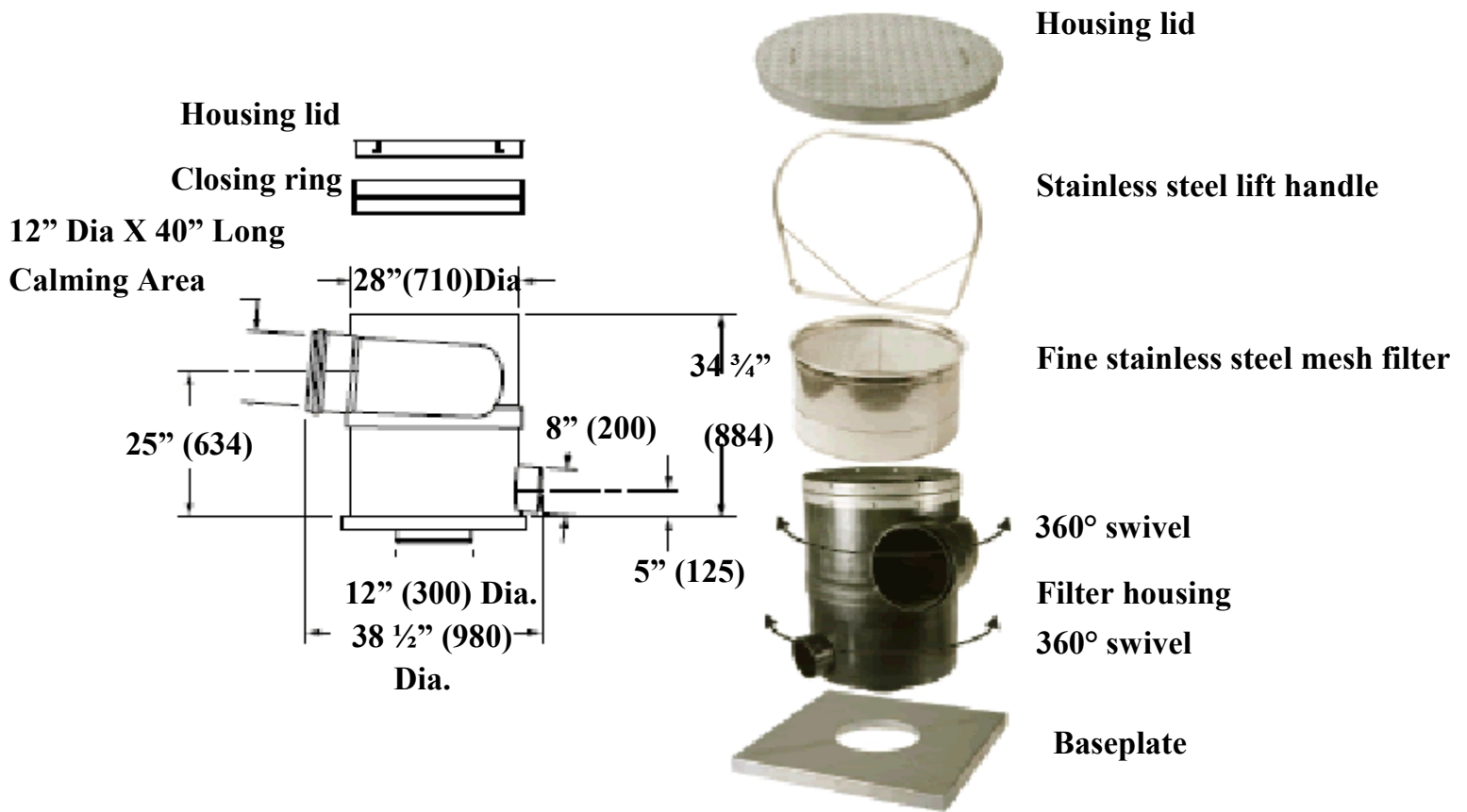


**Function:** Used in installations where multiple downspouts are connected together to a single pipe feeding the vortex filter. The high capacity vortex rainwater fine filter can filter up to a 32,292 square foot roof area for site irrigation, toilet and urinal flushing, janitorial use, laundries, fire protection, evaporative cooling tower make-up, process water or other non-potable uses. The vortex fine filter is usually installed in the underground piping system to remove debris to the storm water system and divert 95% of the clean rainwater to an underground storage tank. The Vortex Filter can also be installed above grade.



**REGULARLY FURNISHED:**

*Polypropylene Filter Housing, Final Ring and Safety Kit, Baseplate, Housing, Lid, .015 inch Stainless Steel Fine Mesh Filter, Baseplate and 20 inch Stainless Steel Lift Handle.*

**ACCESSORIES:**

*Intermediate ring necessary to connect extension tube.  
24 and 48Inch Extension  
36inch Stainless Steel Extension Handle.  
Stainless Steel Blind Insert*

**NOTE:** *The vortex fine filter must be mounted plumb for proper operation. For a roof area above 32,292 square feet, additional vortex fine filters should be added. The filter may be manifold for large roofs.*

*Lids for the Vortex Filter are available in Aluminum, 12 ton or 60 ton.*

**NOTE:** *Dimensions shown in parentheses are in millimeters.*

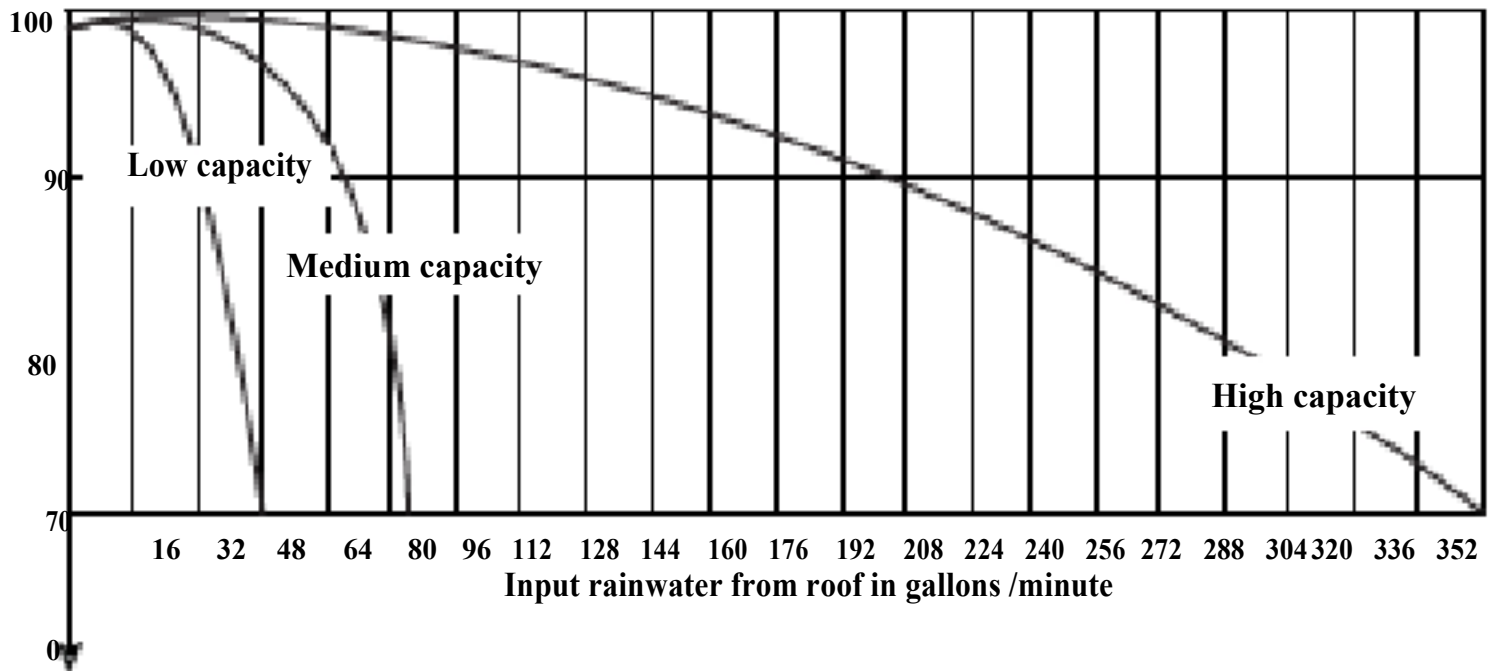
# HIGH CAPACITY VORTEX RAINWATER FINE FILTER

## Principles of the WISY Vortex Fine Filter

The fine filter separates debris larger than 380 microns from the rainwater and directs filtered rainwater to the storage tank over the entire rain event. When dry, the filter acts as a first flush device during the initial rainfall. The filter is designed to provide highly oxygenated water to the tank. This is the first and most important step in the Four Step Rainwater Harvesting System.

The Wisy Vortex Filter is the only vertical rainwater filter in the world and has a self-cleaning effect. Depending on the amount of rainfall and debris filtered, the stainless steel fine mesh filter only needs to be cleaned 1 to 4 times a year in a dishwasher or by hand. The circulating air within the main housing of the Fine Filter dries the stainless steel fine mesh filter thus lowering the demand for more frequent maintenance.

### Efficiency ratio and performance chart



Select the appropriate filter based on your filtration needs and design flow rate.

Our filters efficiently recover the rainwater for various flow rates, i.e. for 95% filtered water you can select\*: -  
Low capacity for up to 32 gallons/minute flow rate -  
Medium capacity for up to 65 gallons/minute flow rate -  
High capacity for up to 208 gallons/minute flow rate

\*Efficiency ratio tested with brand new filters

## VORTEX FINE FILTERS

