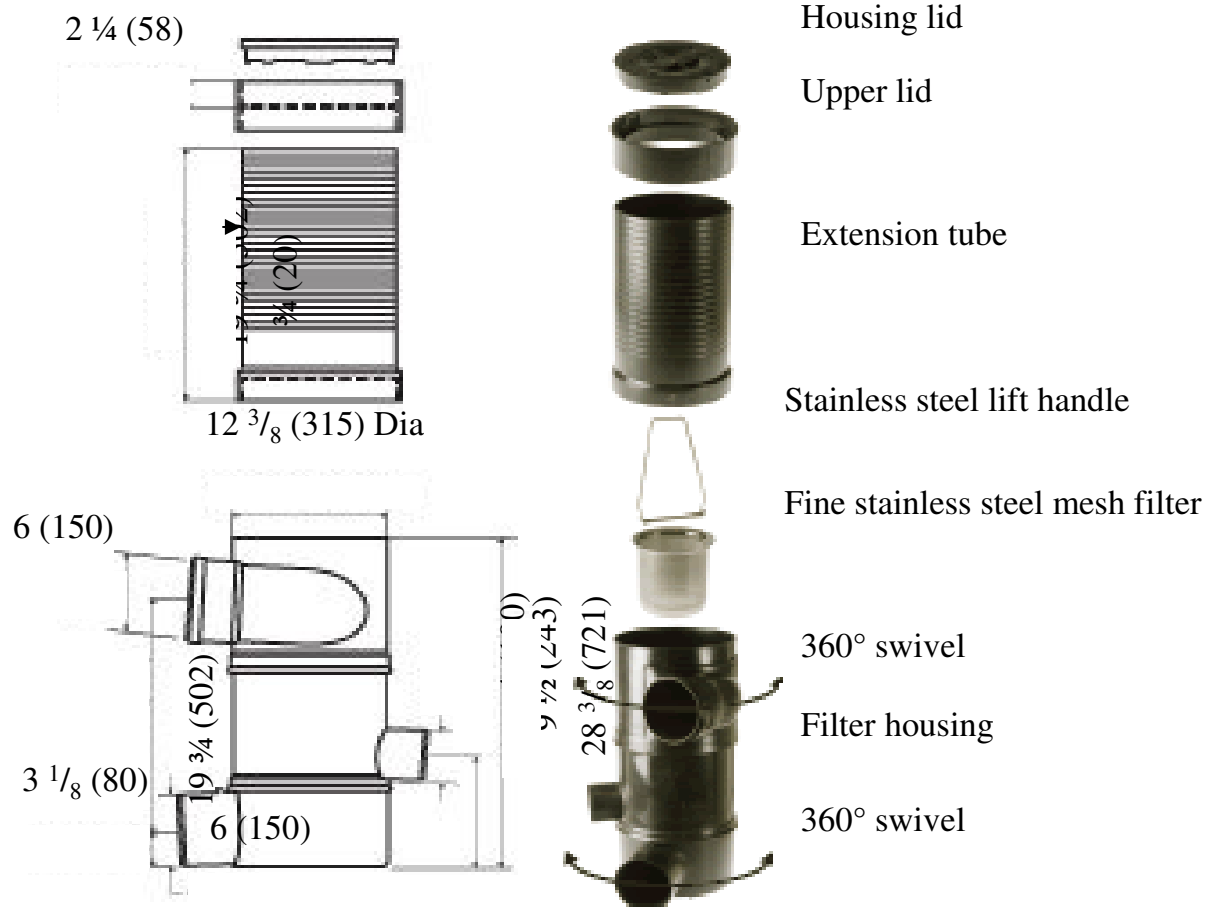


Function: Used in installations where multiple downspouts are connected together to a single pipe into the vortex filter. The medium capacity vortex rainwater fine filter can filter up to a 5,500 square foot roof area for site irrigation, toilet and urinal flushing, janitorial use, laundries, fire protection, evaporative cooling tower make-up, process water or other non-potable uses. The vortex fine filter is typically installed in the underground piping system to remove debris from the storm water system and divert 95% of clean rainwater to an underground storage tank. (An above grade application is possible.)



REGULARLY FURNISHED:

Polypropylene Filter Housing, Upper Ring, Housing Lid, .011 inch Stainless Steel Fine Mesh Filter and 12 inch Stainless Steel Lift Handle.

NOTE: Vortex fine filter must be mounted plumb for proper operation. For a roof area above 5,500 square feet, additional vortex fine filters should be added.

ACCESSORIES:

Blind Insert - Used in place of the mesh filter to divert flow directly to the storm water system.
20" Extension Tube - This Polypropylene tube is used for inspection and as an access opening to the ground level. It is fitted with a collar to accept the lid. It is easily cut to length due to molded-in parallel lines. Up to three extension tubes can be combined.
Stainless Steel Wall Bracket -For securing the filter unit to a wall in above grade applications.
Fixing Set - To secure the handle to the inside of the filter so it will not be lost.
Seepage Basket - For trapping dirt and debris from the rainwater before it exits the filter. It must be emptied and cleaned periodically.

OPTIONS:

25 inch Stainless Steel Lift Handle – To remove mesh filter for cleaning.
39 inch Stainless Steel Lift Handle – To remove mesh filter for cleaning.

NOTE: Dimensions shown in parentheses are in millimeters.

MEDIUM CAPACITY VORTEX RAINWATER FINE FILTER



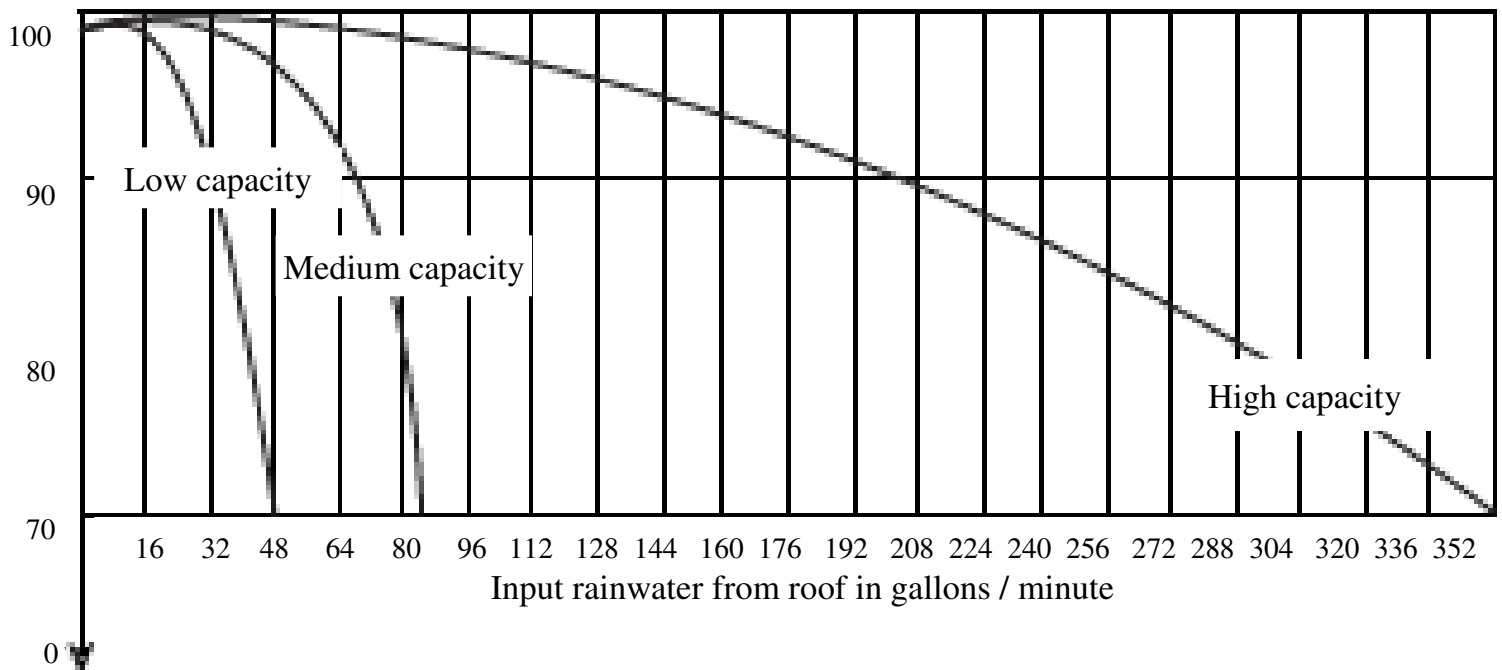
Principles of the WISY Vortex Fine Filter

The fine filter filters and collects rainwater over the entire rain event. When dry, the filter acts as a first flush device during the first 20 seconds of rainfall. It also helps aerate the rainwater.

The filter has a self-cleaning effect. Depending on the amount of rainfall and debris filtered, the stainless steel fine mesh filter should be cleaned about 1 to 4 times a year in a dishwasher or by hand. The circulating air within the main housing of the fine filter dries the stainless steel fine mesh filter thus lowering the demand for more frequent maintenance.

To safeguard against backflow, a backflow device should be installed.

Efficiency ratio and performance chart



Select the appropriate filter based on your filtration needs and design flow rate.

Our filters efficiently recover the rainwater for various flow rates, i.e. for 95% filtered water you can select*:

- Low capacity for up to 32 gallons/minute flow rate
- Medium capacity for up to 65 gallons/minute flow rate
- High capacity for up to 208 gallons/minute flow rate

*Efficiency ratio tested with brand new filters

VORTEX FINE FILTERS